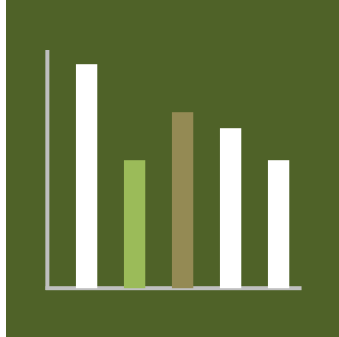


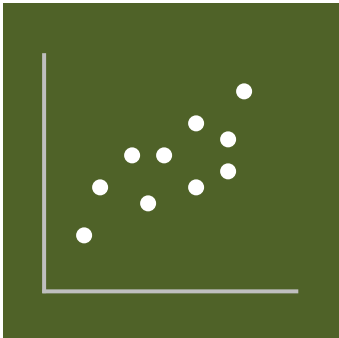
# FUNDAMENTALS OF DATA VISUALIZATION

*(Tables) and fonts!*

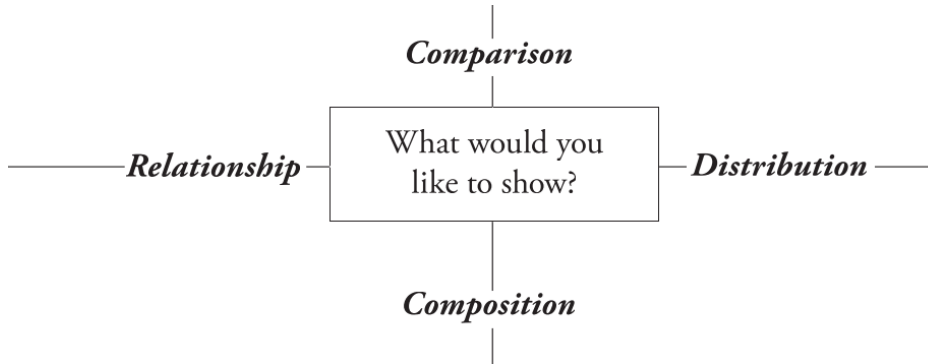
## COMPARE ITEMS



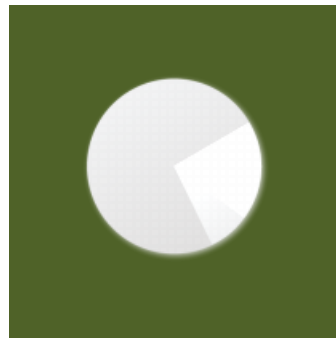
## TRENDS OVER TIME



## CORRELATION

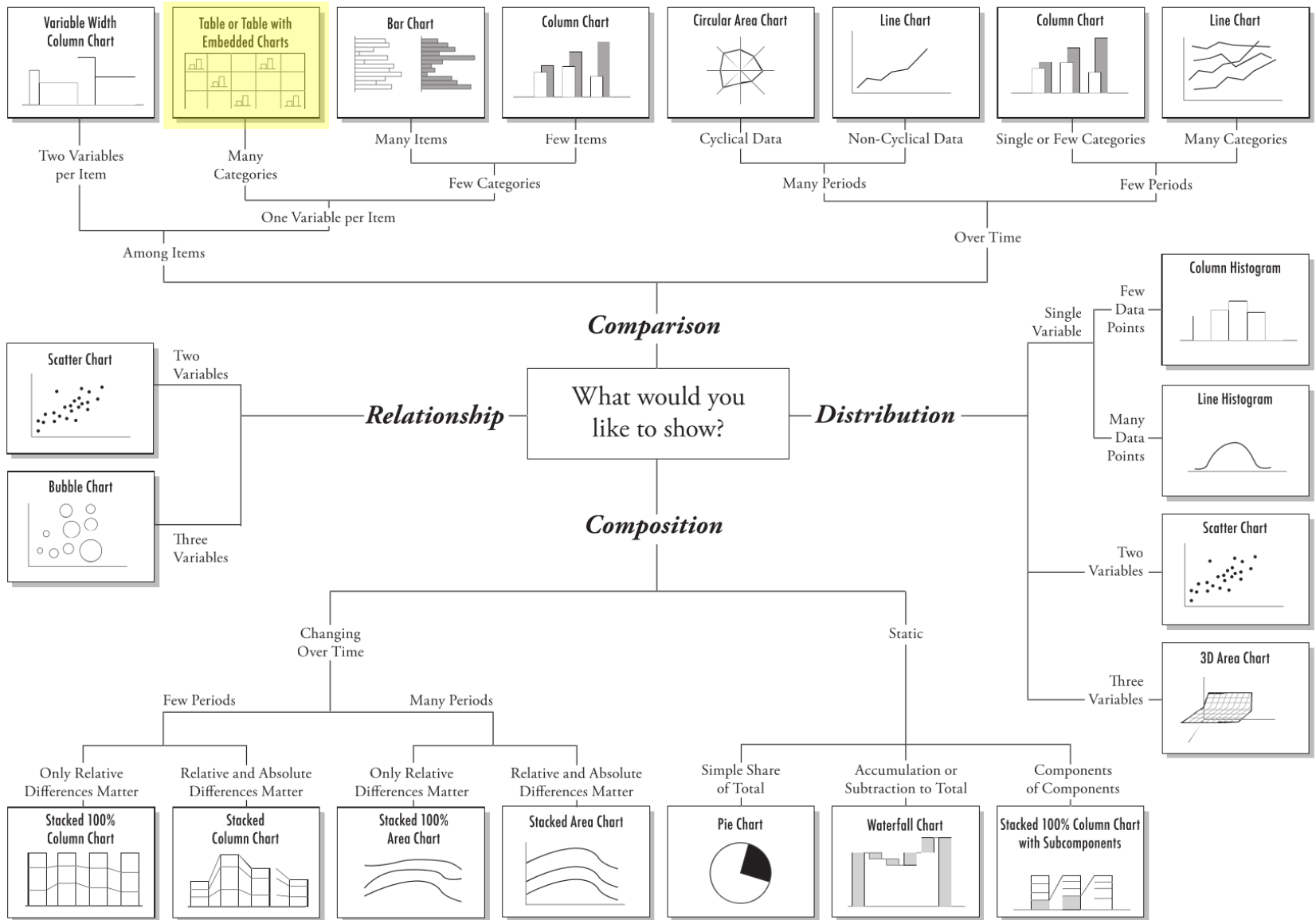


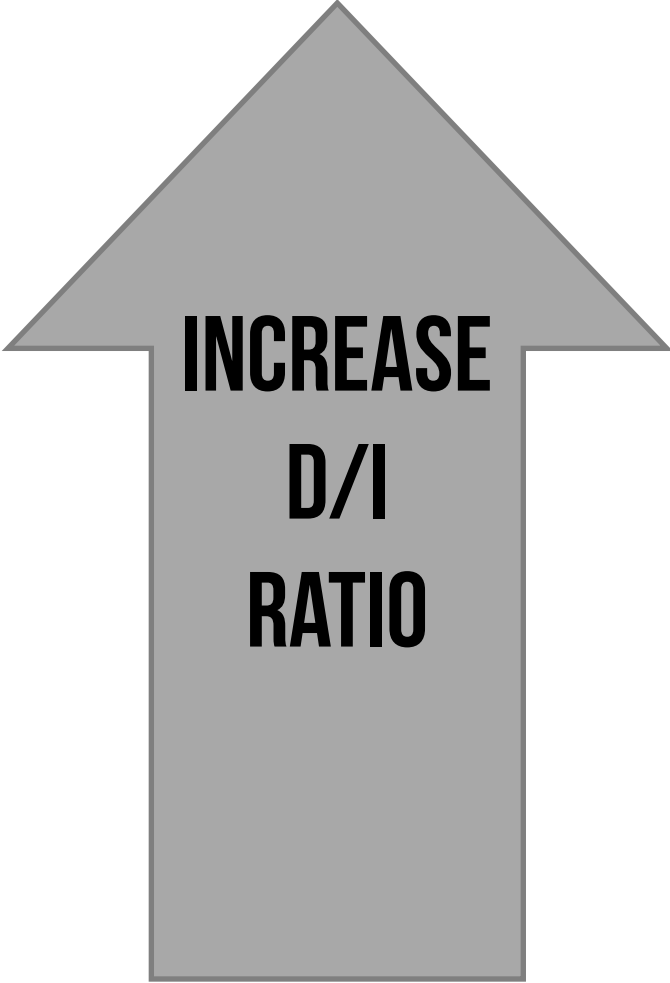
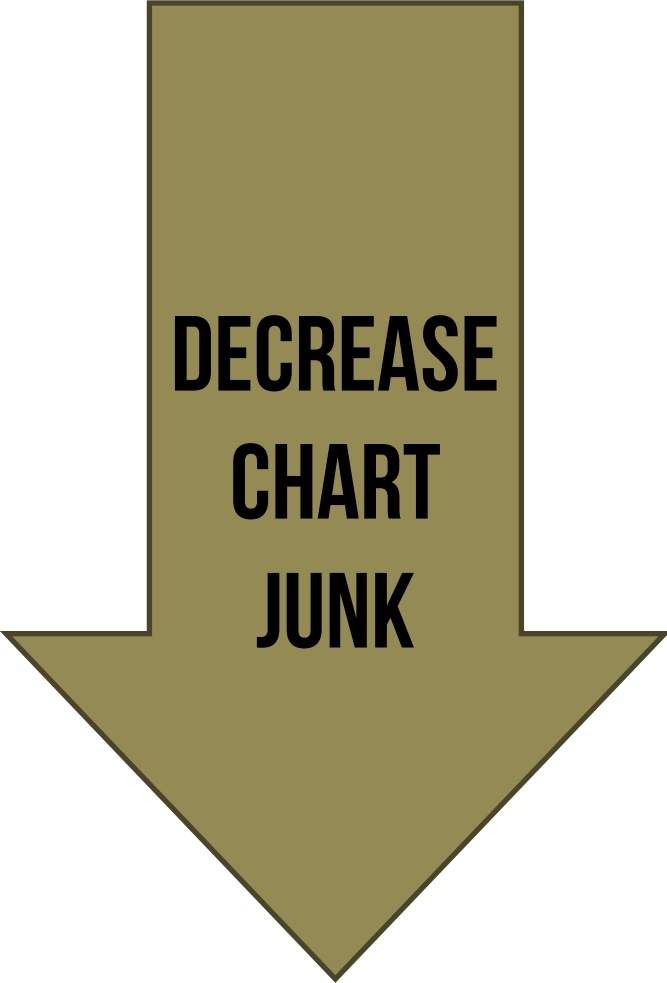
## DISTRIBUTION

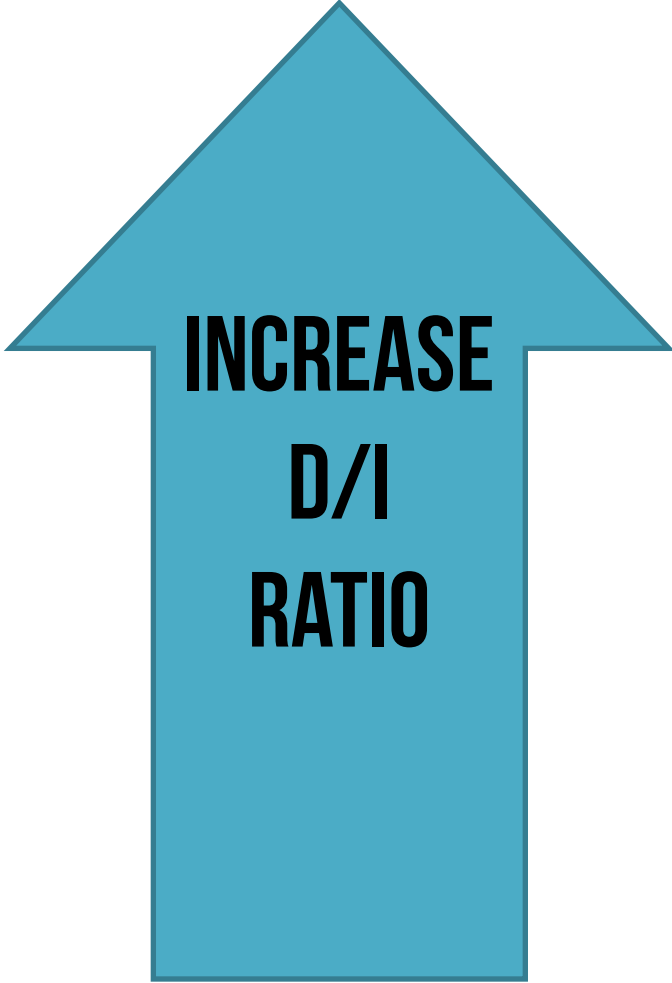
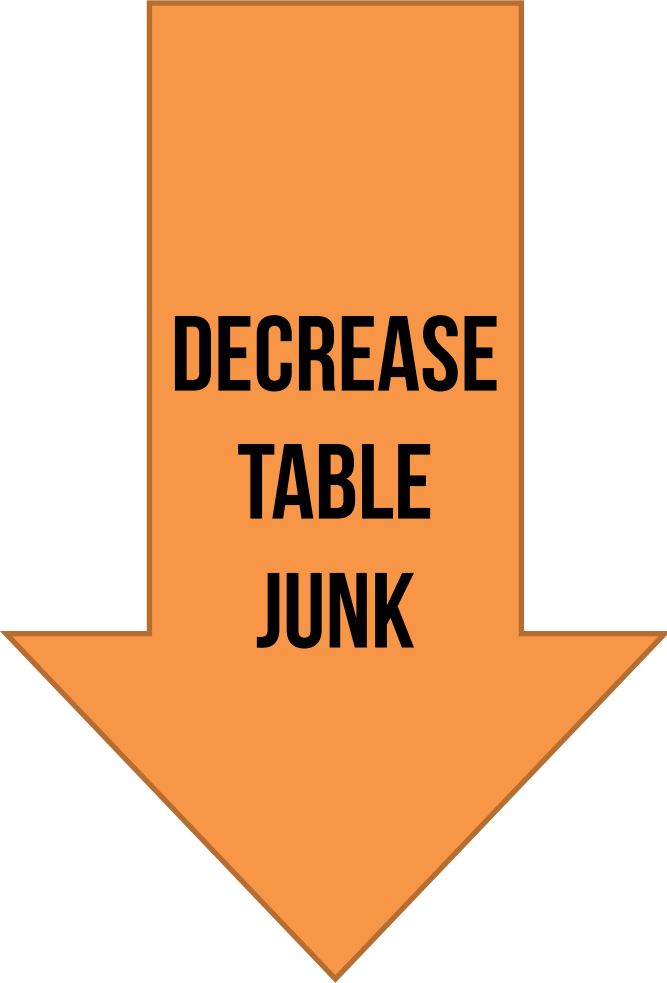


## PROPORTIONS

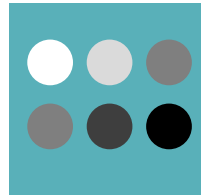
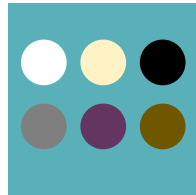
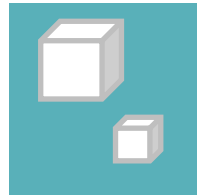
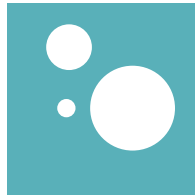
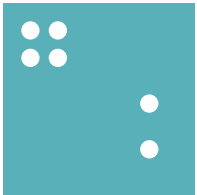
# Chart Suggestions—A Thought-Starter













closure



proximity



continuation

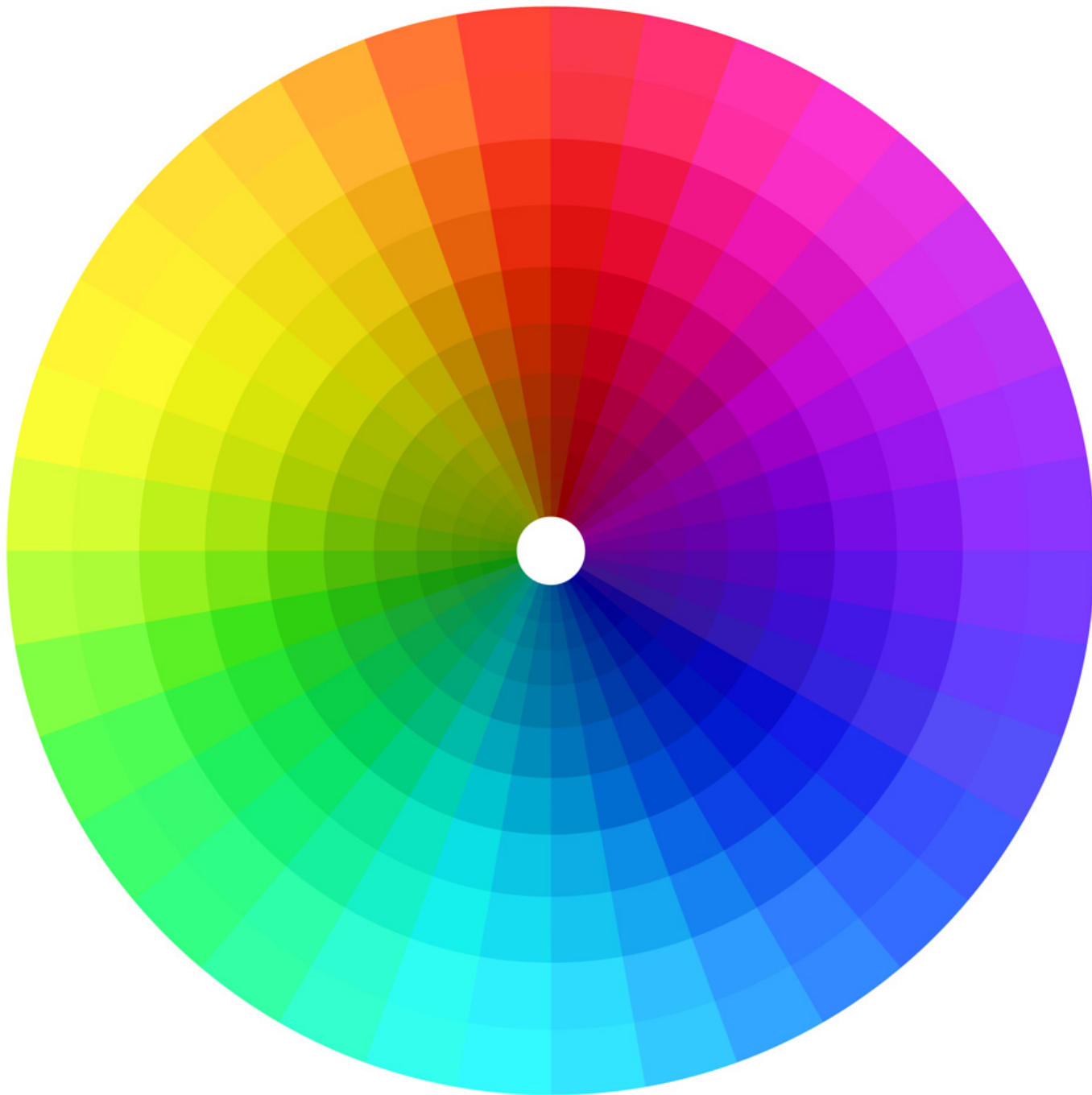


figure and ground  
(tree within the letter "A")



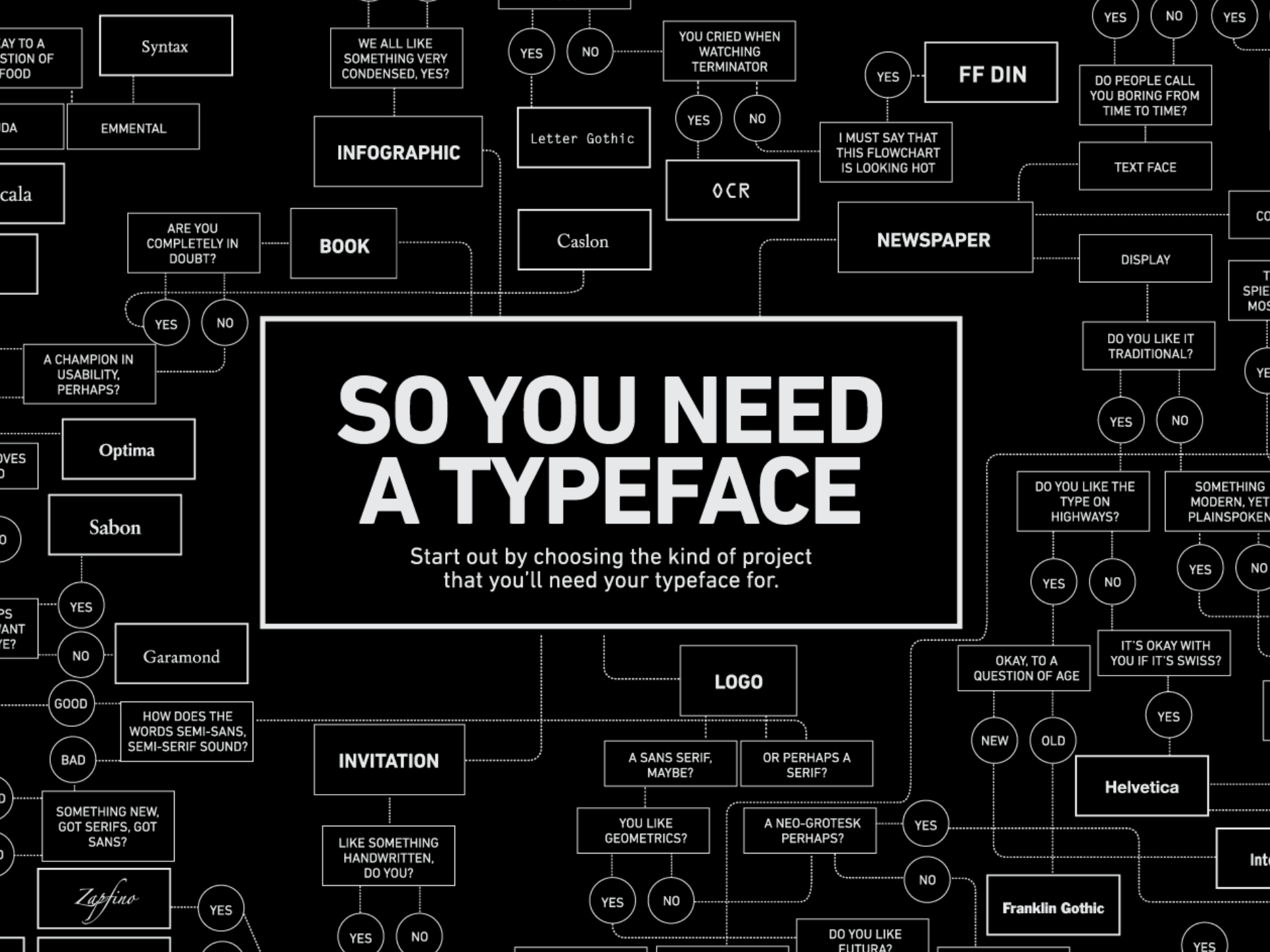
similarity





# SO YOU NEED A TYPEFACE

Start out by choosing the kind of project that you'll need your typeface for.



# **FONT MAKES A DIFFERENCE**

**CHOOSE WISELY, FOR AS THE TRUE FONT WILL BRING YOU LIFE, THE FALSE FONT WILL TAKE IT FROM  
YOU.**

# Font Makes a Difference

Choose wisely, for as the true font will bring you life, the false font will take it from you.

# Font Makes a Difference

Choose wisely, for as the true font will bring you life, the false font will take it from you.

# Font Makes a Difference

Choose wisely, for as the true font will bring you life, the false font will take it from you.

# font Makes a Difference

**Choose wisely, for as the true font will bring you life, the false font will take it from you.**

# Font Makes a Difference

Choose wisely, for as the true font will bring you life, the false font will take it from you.



# Font Makes a Difference

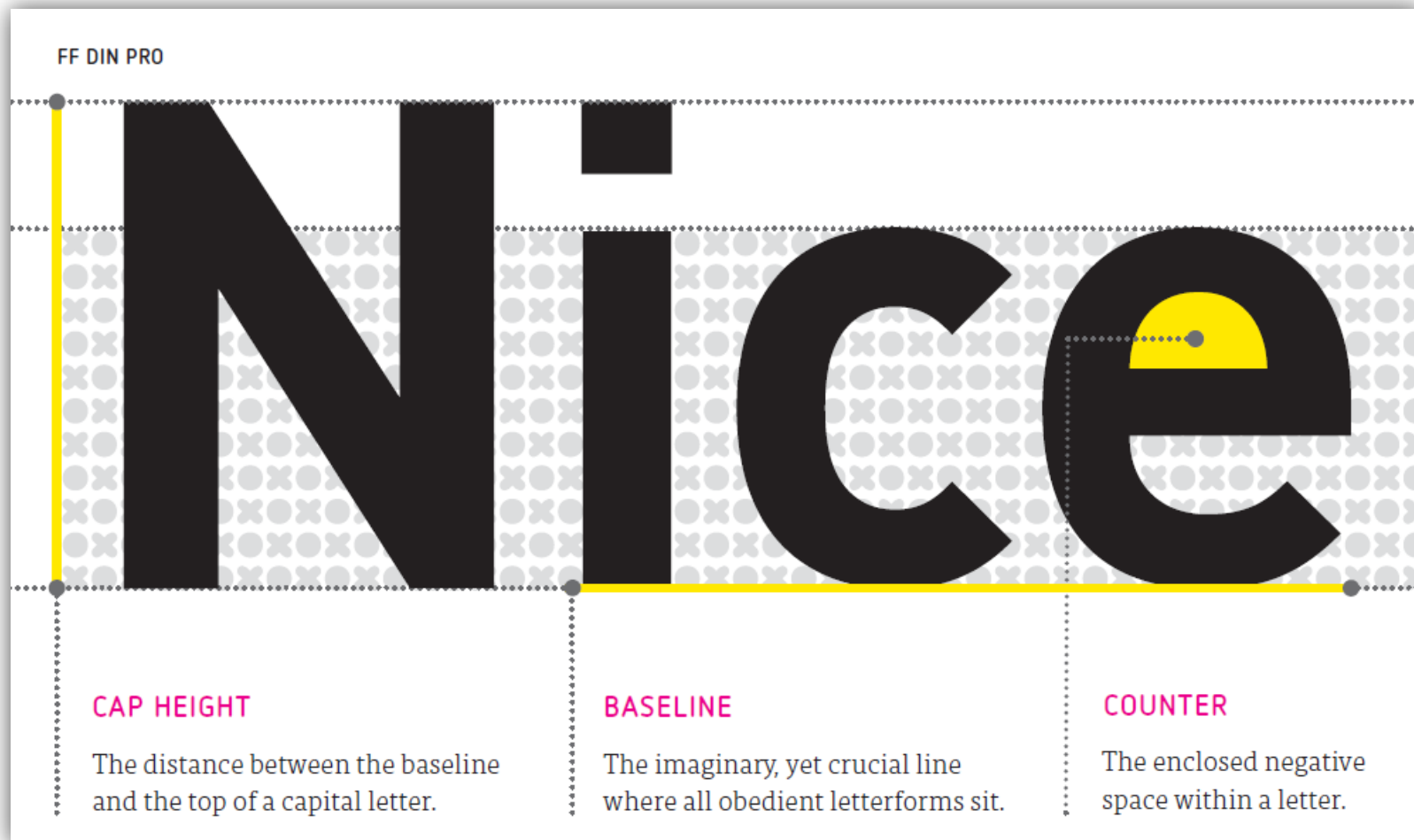
*Choose wisely, for as the true font will bring you life, the false font will take it from you.*

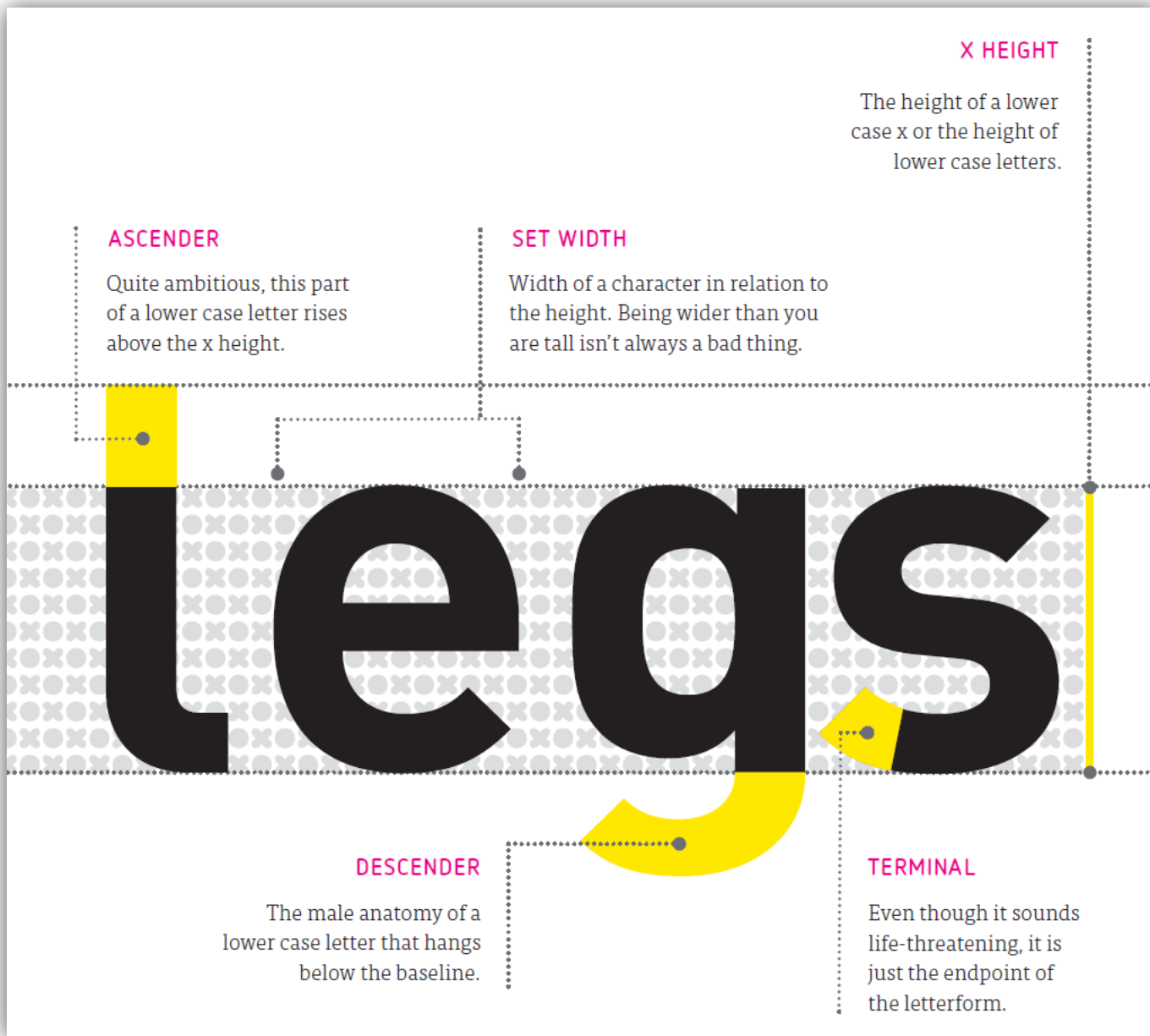
**TYPEFACE** | A *typeface* is a single set of characters that share stylistic unity. A typeface usually comprises an alphabet of letters, numbers, punctuation and diacritical marks.

**FONT** | Old school typographers defined a *font* as a complete character set of a particular typeface in one size. When type made the leap to the digital realm, a font became an electronic file that rendered the typeface in all sizes.

# YOU JUST WANT ME FOR MY BODY

*type anatomy*





## Serif - Cambria

A B C D E F G H I J K L M N O P Q R S T U V W X Y Z

a b c d e f g h i j k l m n o p q r s t u v w x y z

1 2 3 4 5 6 7 8 9 0

.,?!” ; ; @ # \$ % ^ & \* ( ) \_ + / [ ] \ { } |

## Sans-Serif - Calibri

A B C D E F G H I J K L M N O P Q R S T U V W X Y Z

a b c d e f g h i j k l m n o p q r s t u v w x y z

1 2 3 4 5 6 7 8 9 0

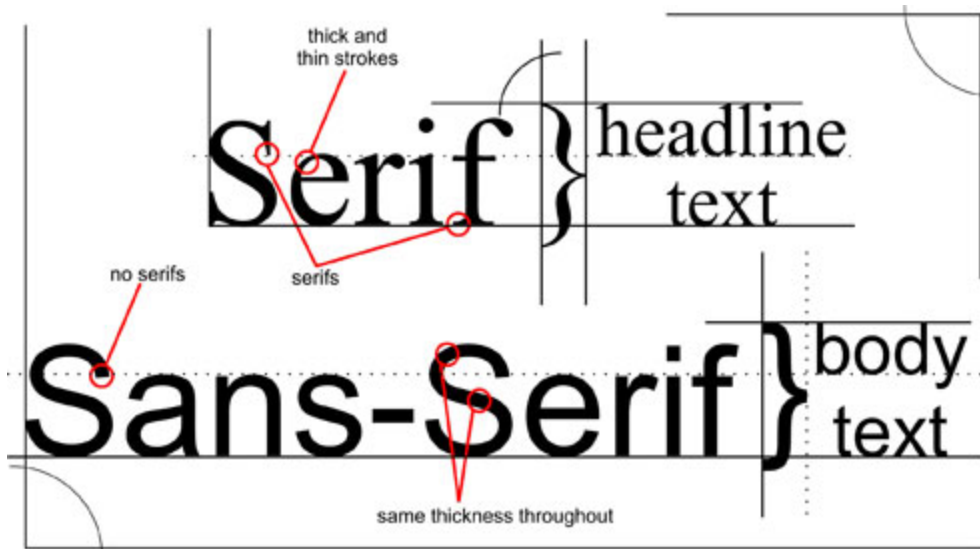
.,?!” ; ; @ # \$ % ^ & \* ( ) \_ + / [ ] \ { } |

## Monospaced serif - Courier

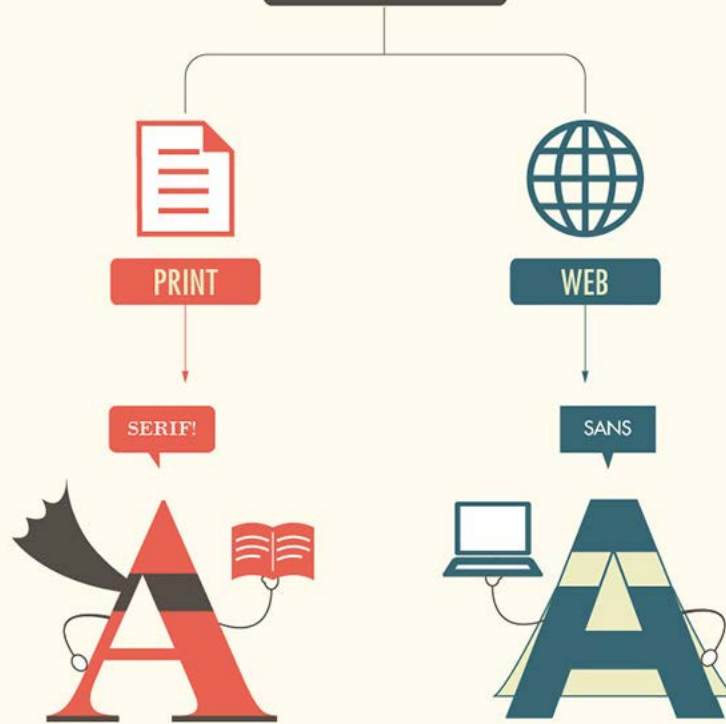
A B C D E F G H I J K L M N O P Q R S T U V W X Y Z  
a b c d e f g h i j k l m n o p q r s t u v w x y z  
1 2 3 4 5 6 7 8 9 0  
. , ? ! " ; ; @ # \$ % ^ & \* ( ) \_ + / [ ] \ { } |

## Monospaced Sans-Serif - Calibri

A B C D E F G H I J K L M N O P Q R S T U V W X Y Z  
a b c d e f g h i j k l m n o p q r s t u v w x y z  
1 2 3 4 5 6 7 8 9 0  
. , ? ! " ; ; @ # \$ % ^ & \* ( ) \_ + / [ ] \ { } |



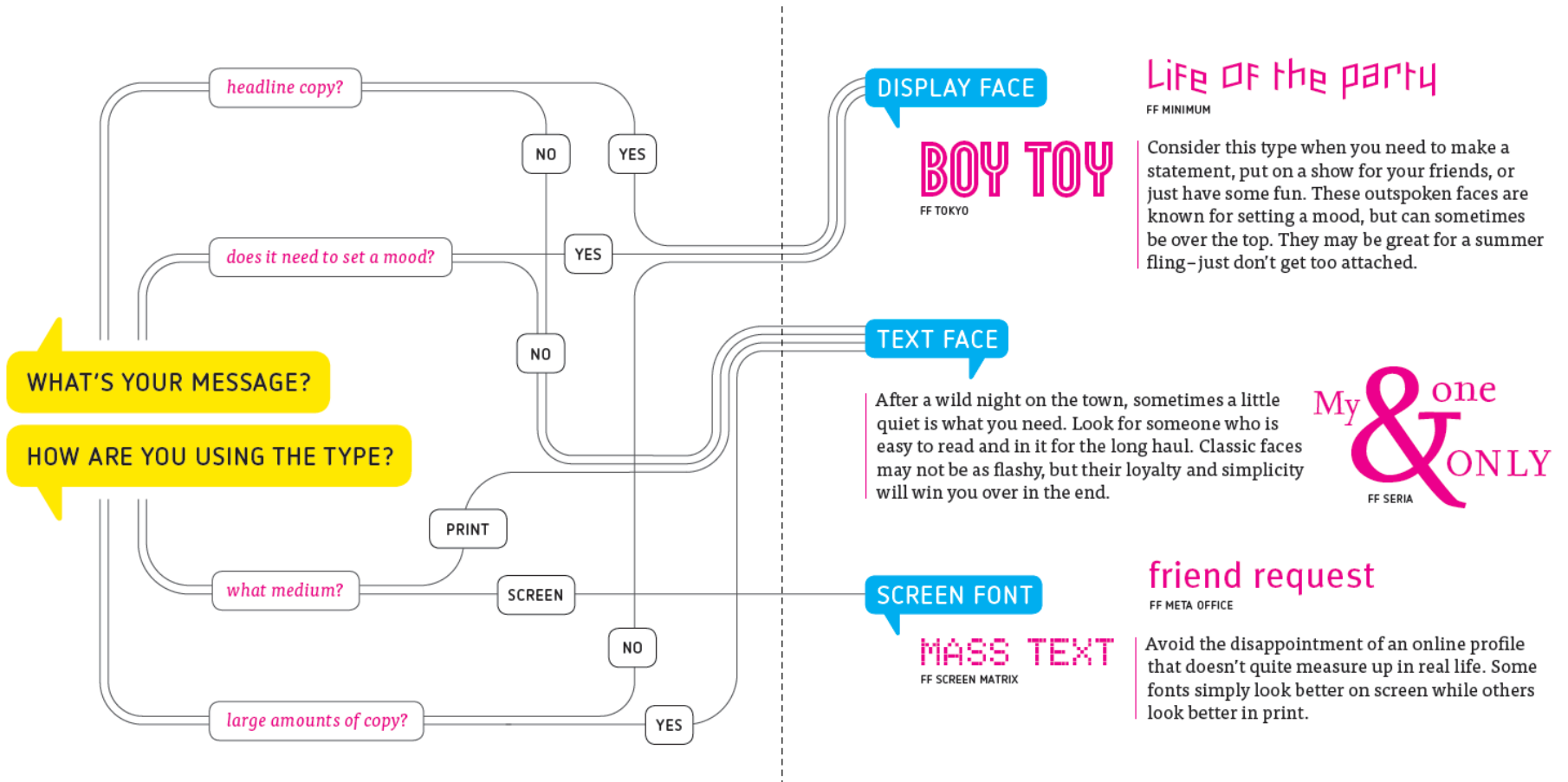
## TYPE OF WORK



THE BEST FONT CHOICES ARE ONES  
WHERE READERS DO NOT NOTICE  
THE FONT

BUT THE MESSAGE





# HOW CLOSE IS TOO CLOSE?

*kerning, leading, letterspacing*

**LEADING** | The amount of horizontal space between two lines of text—*leading* is measured from baseline to baseline. A healthy balance between point size and leading can keep things together and moving ahead smoothly.

**KERNING** | Adjusting the space between individual letters when awkward pauses come between them.

**LETTERSPACING** | The overall spacing between letters in a block of text, it is also known as tracking. Generally, the larger the type, the less letterspacing required.

## LEADING

XXXXXXXXXXXXXXXXXX  
XXXXXXXXXXXXXXXXXX  
XXXXXXXXXXXXXXXXXX  
XXXXXXXXXXXXXXXXXX

UPTIGHT AND HARD TO READ

XXXXXXXXXXXXXXXXXX  
XXXXXXXXXXXXXXXXXX  
XXXXXXXXXXXXXXXXXX  
XXXXXXXXXXXXXXXXXX

PLAYING TOO FAST AND LOOSE

XXXXXXXXXXXXXXXXXX  
XXXXXXXXXXXXXXXXXX  
XXXXXXXXXXXXXXXXXX  
XXXXXXXXXXXXXXXXXX

AHH, PERFECTION

CORPULENT

## LETTERSPACING

lonely

WE'RE DRIFTING APART

healthy

LOVE AT FIRST SIGHT

smother

I NEED SOME SPACE



Generally, larger type requires tighter kerning.

## KERNING

Lust

IT'S GETTING AWKWARD

Love

COMPATIBLE CHARACTERS

FF META PRO MEDIUM

DELICATO BOLD

2001: A SPACE ODYSSEY

V FOR VENDETTA

F R I N G E

What works for **emphasis**?

What works for *emphasis*?

What works for **emphasis**?

What works **less well** for emphasis?

What works **less well** for emphasis?

What doesn't work for emphasis?

What **doesn't work** for emphasis?

**NUMBERS** When set in body copy, numbers can look large. Try reducing the point size of the numbers slightly so they blend in better.

**READABILITY** Columns that are too short or too wide are hard to read. An ideal measure is 60–70 characters per line, or 40 when romancing online.

**CLUTTER** Avoid distracting background patterns or busy photos behind the type.

**POINT SIZE** Always choose the body copy size first, and make everything else work with it.

**SPACING ISSUES** Tighten up the letterspacing when using large type, such as in a headline.

**LEADING** The bigger the body copy, the smaller the leading, especially if you use all caps.

**BOREDOM** Consider adding drop caps, rules, or other special graphic devices into the mix.

**HIERARCHY** Design a clear visual path for the viewer to follow. Just like your significant other, the most important text should get the most attention.

Use fewer fonts and typeface styles in your project. The old adage 'two's company three's a crowd' works with type as well.

**WIDOWS & ORPHANS** Show compassion to orphans (words abandoned at the beginning of a column) and widows (words left alone at the end of a paragraph).





From Matt Robinson and Tom Wrigglesworth via [Flowingdata.com](https://flowingdata.com)



From Matt Robinson and Tom Wrigglesworth via [Flowingdata.com](http://Flowingdata.com)





From Matt Robinson and Tom Wrigglesworth via [Flowingdata.com](http://Flowingdata.com)

**[WWW.FONTSQLIRELL.COM](http://WWW.FONTSQLIRELL.COM)**

**[WWW.DAFONT.COM](http://WWW.DAFONT.COM)**

**[HTTPS://WWW.GOOGLE.COM/FONTS](https://WWW.GOOGLE.COM/FONTS)**

# BEBAS NEUE

↓ DOWNLOAD OTF

🖥️ 🌐 📱 | Dharma Type | Display | 1 Style

Specimens

**Test Drive**

Glyphs

License

Webfont Kit

Bebas Neue Regular ▾

This is Jackie's Favorite Font

48 ▾

**THIS IS JACKIE'S FAVORITE FONT**



**USE PRE ATTENTIVE,  
GESTALT AND COLOR  
CHOICES WISELY,  
PADAWAN**



**REMOVE GRIDLINES  
ADD HAIRLINES  
HOW SIG IS SIG?**

Team	1999	2000	2001	2002	2003	2004	2005	2006
Arizona Diamondbacks	\$61,184,250	\$72,346,275	\$72,505,825	\$77,893,950	\$80,657,500	\$80,521,550	\$88,348,000	\$66,943,475
Atlanta Braves	\$68,134,250	\$70,448,200	\$74,073,950	\$75,379,325	\$96,872,425	\$79,024,800	\$85,148,575	\$79,708,500
Baltimore Orioles	\$73,057,675	\$70,213,300	\$62,436,500	\$47,260,525	\$59,872,650	\$45,725,575	\$66,580,850	\$64,808,675
Boston Red Sox	\$55,142,125	\$64,950,275	\$85,592,900	\$90,305,050	\$89,473,775	\$104,340,450	\$108,314,225	\$111,204,200
Chicago White Sox	\$22,740,725	\$25,839,225	\$57,743,525	\$52,826,700	\$49,048,075	\$62,704,325	\$69,655,550	\$98,918,900
Chicago Cubs	\$51,889,225	\$50,449,450	\$61,553,675	\$67,581,100	\$72,092,250	\$78,535,925	\$77,866,900	\$84,679,625
Cincinnati Reds	\$28,588,575	\$43,395,550	\$43,488,350	\$37,542,000	\$50,874,800	\$38,453,450	\$49,715,225	\$53,115,200
Cleveland Indians	\$60,769,300	\$72,962,375	\$76,645,825	\$65,757,875	\$39,382,925	\$28,807,750	\$36,060,700	\$56,795,875
Colorado Rockies	\$53,716,200	\$54,563,575	\$65,803,700	\$52,639,850	\$55,818,050	\$57,670,000	\$41,197,425	\$34,277,500
Detroit Tigers	\$30,450,600	\$53,949,225	\$44,492,125	\$49,150,000	\$47,272,125	\$41,387,100	\$61,605,525	\$76,205,625
Florida Marlins	\$17,477,775	\$17,303,450	\$29,586,800	\$37,482,075	\$43,185,975	\$38,998,175	\$55,903,675	\$14,421,625
Houston Astros	\$49,643,275	\$47,489,925	\$55,909,875	\$58,748,525	\$67,778,700	\$74,666,300	\$73,825,975	\$88,991,825
Kansas City Royals	\$22,794,225	\$20,922,325	\$30,726,725	\$40,738,800	\$38,959,125	\$39,674,175	\$34,149,075	\$40,770,700
Los Angeles Dodgers	\$70,773,175	\$81,596,550	\$93,949,100	\$91,202,850	\$101,824,625	\$86,244,550	\$67,524,575	\$91,830,500
Anaheim/Los Angeles Angels	\$39,265,275	\$42,886,800	\$37,554,975	\$55,108,625	\$73,177,475	\$93,596,925	\$81,911,925	\$103,625,325
Milwaukee Brewers	\$38,329,400	\$29,519,800	\$39,897,525	\$43,351,575	\$35,023,275	\$27,518,500	\$40,234,825	\$56,790,000
Minnesota Twins	\$18,502,400	\$15,884,125	\$22,548,800	\$38,677,875	\$53,466,350	\$51,524,050	\$52,421,300	\$61,355,825
Montreal/Washington Nationals	\$14,977,325	\$30,006,750	\$28,978,750	\$34,527,225	\$49,950,950	\$35,997,925	\$40,484,575	\$52,722,925
New York Mets	\$57,824,475	\$79,509,775	\$83,191,450	\$90,993,850	\$100,748,800	\$96,758,950	\$97,009,400	\$97,020,275
New York Yankees	\$75,923,825	\$79,774,350	\$88,541,850	\$108,559,125	\$133,670,525	\$157,616,825	\$198,017,725	\$177,376,950
Oakland Athletics	\$22,340,700	\$29,603,075	\$31,306,250	\$36,740,500	\$48,423,875	\$55,393,675	\$53,720,450	\$62,322,050
Philadelphia Phillies	\$26,118,525	\$40,782,750	\$40,061,700	\$51,745,525	\$61,017,250	\$86,314,050	\$91,671,075	\$81,734,575
Pittsburgh Pirates	\$18,498,050	\$27,815,700	\$42,498,650	\$36,485,850	\$48,698,300	\$29,840,675	\$34,047,325	\$41,846,200
San Diego Padres	\$42,703,875	\$45,684,175	\$35,493,625	\$35,711,200	\$37,858,325	\$54,639,500	\$56,150,175	\$62,254,625
Seattle Mariners	\$48,041,825	\$55,649,050	\$67,546,875	\$80,282,675	\$80,726,400	\$72,807,000	\$67,096,350	\$84,927,400
San Francisco Giants	\$44,943,550	\$51,670,975	\$58,641,350	\$72,499,850	\$79,184,775	\$66,144,500	\$85,045,600	\$90,862,075
St. Louis Cardinals	\$42,313,275	\$55,901,725	\$66,612,800	\$71,248,325	\$67,057,175	\$75,633,525	\$89,730,625	\$85,039,625
Tampa Bay Rays	\$29,269,400	\$50,617,050	\$50,881,125	\$30,696,425	\$19,630,000	\$27,321,000	\$26,690,675	\$31,623,175
Texas Rangers	\$71,956,675	\$68,073,000	\$71,374,525	\$90,777,700	\$87,105,400	\$47,263,775	\$46,089,375	\$52,796,875
Toronto Blue Jays	\$42,797,425	\$44,459,925	\$67,677,225	\$66,262,350	\$47,480,550	\$48,093,275	\$43,621,625	\$66,587,975
Average	\$43,338,913	\$49,875,624	\$56,243,878	\$59,605,910	\$63,877,748	\$62,107,276	\$66,361,310	\$72,051,937



Team	1999	2000	2001	2002	2003	2004	2005	2006
Arizona Diamondbacks	\$61,184,250	\$72,346,275	\$72,505,825	\$77,893,950	\$80,657,500	\$60,521,550	\$58,348,000	\$56,943,475
Atlanta Braves	\$68,134,250	\$70,448,200	\$74,073,950	\$75,379,325	\$96,872,425	\$79,024,800	\$85,148,575	\$79,708,500
Baltimore Orioles	\$73,057,675	\$70,213,300	\$62,436,500	\$47,260,525	\$59,872,650	\$45,725,575	\$66,580,850	\$64,808,675
Boston Red Sox	\$55,142,125	\$64,950,275	\$85,592,900	\$90,305,050	\$89,473,775	\$104,340,450	\$108,314,225	\$111,204,200
Chicago White Sox	\$22,740,725	\$26,839,225	\$57,743,525	\$62,826,700	\$49,048,075	\$62,704,325	\$69,655,550	\$98,918,900
Chicago Cubs	\$51,889,225	\$50,449,450	\$61,553,675	\$67,581,100	\$72,092,250	\$78,535,925	\$77,866,900	\$84,679,625
Cincinnati Reds	\$28,588,575	\$43,395,550	\$43,488,350	\$37,542,000	\$50,874,800	\$38,453,450	\$49,715,225	\$53,115,200
Cleveland Indians	\$60,769,300	\$72,962,375	\$76,645,825	\$66,757,875	\$39,382,925	\$28,807,750	\$36,060,700	\$56,795,875
Colorado Rockies	\$53,716,200	\$54,553,575	\$65,803,700	\$62,639,850	\$55,818,050	\$57,670,000	\$41,197,425	\$34,277,500
Detroit Tigers	\$30,450,600	\$53,949,225	\$44,492,125	\$49,150,000	\$47,272,125	\$41,387,100	\$61,605,525	\$76,205,625
Florida Marlins	\$17,477,775	\$17,303,450	\$29,586,800	\$37,482,075	\$43,185,975	\$38,998,175	\$55,903,675	\$14,421,625
Houston Astros	\$49,643,275	\$47,489,925	\$55,909,875	\$58,748,525	\$67,778,700	\$74,666,300	\$73,825,975	\$88,991,825
Kansas City Royals	\$22,794,225	\$20,922,325	\$30,726,725	\$40,736,800	\$38,959,125	\$39,674,175	\$34,149,075	\$40,770,700
Los Angeles Dodgers	\$70,773,175	\$81,596,550	\$93,949,100	\$91,202,850	\$101,824,625	\$86,244,550	\$67,524,575	\$91,830,500
Anaheim/Los Angeles Angels	\$39,265,275	\$42,886,800	\$37,554,975	\$55,108,625	\$73,177,475	\$93,596,925	\$81,911,925	\$103,625,325
Milwaukee Brewers	\$38,329,400	\$28,519,800	\$39,897,525	\$43,351,575	\$35,023,275	\$27,518,500	\$40,234,825	\$56,790,000
Minnesota Twins	\$18,502,400	\$15,884,125	\$22,548,800	\$38,677,875	\$53,466,350	\$51,524,050	\$52,421,300	\$61,355,825
Montreal/Washington Nationals	\$14,977,325	\$30,006,750	\$28,978,750	\$34,527,225	\$49,950,950	\$35,997,925	\$40,484,575	\$52,722,925
New York Mets	\$57,824,475	\$79,509,775	\$83,191,450	\$90,993,850	\$100,748,800	\$96,758,950	\$97,009,400	\$97,020,275
New York Yankees	\$75,923,825	\$79,774,350	\$88,541,850	\$108,559,125	\$133,670,525	\$157,616,825	\$198,017,725	\$177,376,950
Oakland Athletics	\$22,340,700	\$29,603,075	\$31,306,250	\$36,740,500	\$48,423,875	\$55,393,675	\$53,720,450	\$62,322,050
Philadelphia Phillies	\$26,118,525	\$40,782,750	\$40,061,700	\$51,745,525	\$61,017,250	\$86,314,050	\$91,671,075	\$81,734,575
Pittsburgh Pirates	\$18,498,050	\$27,815,700	\$42,498,650	\$36,485,850	\$48,698,300	\$29,840,675	\$34,047,325	\$41,846,200
San Diego Padres	\$42,703,875	\$45,684,175	\$35,493,625	\$35,711,200	\$37,858,325	\$54,639,500	\$56,150,175	\$62,254,625
Seattle Mariners	\$48,041,825	\$56,649,050	\$67,546,875	\$80,282,675	\$80,726,400	\$72,807,000	\$67,096,350	\$84,927,400
San Francisco Giants	\$44,943,550	\$51,670,975	\$58,641,350	\$72,499,850	\$79,184,775	\$66,144,500	\$86,045,600	\$90,852,075
St. Louis Cardinals	\$42,313,275	\$56,901,725	\$56,612,800	\$71,248,325	\$67,057,175	\$75,633,525	\$89,730,625	\$85,039,625
Tampa Bay Rays	\$29,269,400	\$50,617,050	\$50,881,125	\$30,696,425	\$19,630,000	\$27,321,000	\$26,590,675	\$31,623,175
Texas Rangers	\$71,956,675	\$68,073,000	\$71,374,525	\$90,777,700	\$87,105,400	\$47,263,775	\$46,089,375	\$52,796,875
Toronto Blue Jays	\$42,797,425	\$44,459,925	\$67,677,225	\$66,262,350	\$47,480,550	\$48,093,275	\$43,621,625	\$66,587,975
<b>Average</b>	<b>\$43,335,913</b>	<b>\$49,875,524</b>	<b>\$56,243,878</b>	<b>\$59,605,910</b>	<b>\$63,877,748</b>	<b>\$62,107,276</b>	<b>\$66,361,310</b>	<b>\$72,051,937</b>

Team	1999	2000	2001	2002	2003	2004	2005	2006
Arizona Diamondbacks	61,184,250	72,346,275	72,505,825	77,893,950	80,657,500	60,521,550	58,348,000	56,943,475
Atlanta Braves	68,134,250	70,448,200	74,073,950	75,379,325	96,872,425	79,024,800	85,148,575	79,708,500
Baltimore Orioles	73,057,675	70,213,300	62,436,500	47,260,525	59,872,650	45,725,575	66,580,850	64,808,675
Boston Red Sox	55,142,125	64,950,275	85,592,900	90,305,050	89,473,775	104,340,450	108,314,225	111,204,200
Chicago White Sox	22,740,725	26,839,225	57,743,525	52,826,700	49,048,075	62,704,325	69,655,550	98,918,900
Chicago Cubs	51,889,225	50,449,450	61,553,675	67,581,100	72,092,250	78,535,925	77,866,900	84,679,625
Cincinnati Reds	28,588,575	43,395,550	43,488,350	37,542,000	50,874,800	38,453,450	49,715,225	53,115,200
Cleveland Indians	60,769,300	72,962,375	76,645,825	65,757,875	39,382,925	29,807,750	36,060,700	56,795,875
Colorado Rockies	53,716,200	54,563,575	65,803,700	52,639,850	55,818,050	57,670,000	41,197,425	34,277,500
Detroit Tigers	30,450,600	53,949,225	44,492,125	49,150,000	47,272,125	41,387,100	61,605,625	76,205,625
Florida Marlins	17,477,775	17,303,450	29,586,800	37,482,075	43,185,975	38,998,175	55,903,675	14,421,625
Houston Astros	49,643,275	47,489,925	55,909,875	58,748,525	67,778,700	74,666,300	73,825,975	88,991,825
Kansas City Royals	22,794,225	20,922,325	30,726,725	40,738,800	38,959,125	39,674,175	34,149,075	40,770,700
Los Angeles Dodgers	70,773,175	81,596,550	93,949,100	91,202,850	101,824,625	86,244,550	67,524,575	91,830,500
Anaheim/Los Angeles Angels	39,265,275	42,886,800	37,554,975	55,108,625	73,177,475	93,596,925	81,911,925	103,625,325
Milwaukee Brewers	38,329,400	28,519,800	39,897,525	43,351,575	35,023,275	27,518,500	40,234,825	56,790,000
Minnesota Twins	18,502,400	15,884,125	22,548,800	38,677,875	53,466,350	51,524,050	52,421,300	61,355,825
Montreal/Washington Nationals	14,977,325	30,006,750	28,978,750	34,527,225	49,950,950	35,997,925	40,484,575	52,722,925
New York Mets	57,824,475	79,509,775	83,191,450	90,993,850	100,748,800	96,758,950	97,009,400	97,020,275
New York Yankees	75,923,825	79,774,350	88,541,850	108,559,125	133,670,525	157,616,825	198,017,725	177,376,950
Oakland Athletics	22,340,700	29,603,075	31,306,250	36,740,500	48,423,875	55,393,675	53,720,450	62,322,050
Philadelphia Phillies	26,118,525	40,782,750	40,061,700	51,745,525	61,017,250	86,314,050	91,671,075	81,734,575
Pittsburgh Pirates	18,498,050	27,815,700	42,498,650	36,486,850	48,698,300	29,840,675	34,047,325	41,846,200
San Diego Padres	42,703,875	45,684,175	35,493,625	35,711,200	37,858,325	54,639,500	56,150,175	62,254,625
Seattle Mariners	48,041,825	56,649,050	67,546,875	80,282,675	80,726,400	72,807,000	67,096,350	84,927,400
San Francisco Giants	44,943,550	51,670,975	58,641,350	72,499,850	79,184,775	66,144,500	86,045,600	90,862,075
St. Louis Cardinals	42,313,275	56,901,725	66,612,800	71,248,325	67,057,175	75,633,525	89,730,625	85,039,625
Tampa Bay Rays	29,269,400	50,617,050	50,881,125	30,696,425	19,630,000	27,321,000	26,690,675	31,623,175
Texas Rangers	71,956,675	68,073,000	71,374,525	90,777,700	87,105,400	47,263,775	46,089,375	52,796,875
Toronto Blue Jays	42,797,425	44,459,925	67,677,225	66,262,350	47,480,550	48,093,275	43,621,625	66,587,975
<b>Average Salary</b>	<b>43,338,913</b>	<b>49,875,624</b>	<b>56,243,878</b>	<b>59,605,910</b>	<b>63,877,748</b>	<b>62,107,276</b>	<b>66,361,310</b>	<b>72,051,937</b>

Team	1999	2000	2001	2002	2003	2004	2005	2006
Arizona Diamondbacks	61,184,250	72,346,275	72,505,825	77,893,950	80,657,500	60,521,550	58,348,000	56,943,475
Atlanta Braves	68,134,250	70,448,200	74,073,950	75,379,325	96,872,425	79,024,800	85,148,575	79,708,500
Baltimore Orioles	73,057,675	70,213,300	62,436,500	47,260,525	59,872,650	45,725,575	66,580,850	64,808,675
Boston Red Sox	55,142,125	64,950,275	85,592,900	90,305,050	89,473,775	104,340,450	108,314,225	111,204,200
Chicago White Sox	22,740,725	26,839,225	57,743,525	52,826,700	49,048,075	62,704,325	69,655,550	98,918,900
Chicago Cubs	51,889,225	50,449,450	61,553,675	67,581,100	72,092,250	78,535,925	77,866,900	84,679,625
Cincinnati Reds	28,588,575	43,395,550	43,488,350	37,542,000	50,874,800	38,453,450	49,715,225	53,115,200
Cleveland Indians	60,769,300	72,962,375	76,645,825	65,757,875	39,382,925	29,807,750	36,060,700	56,795,875
Colorado Rockies	53,716,200	54,563,575	65,803,700	52,639,850	55,818,050	57,670,000	41,197,425	34,277,500
Detroit Tigers	30,450,600	53,949,225	44,492,125	49,150,000	47,272,125	41,387,100	61,605,625	76,205,625
Florida Marlins	17,477,775	17,303,450	29,586,800	37,482,075	43,185,975	38,998,175	55,903,675	14,421,625
Houston Astros	49,643,275	47,489,925	55,909,875	58,748,525	67,778,700	74,666,300	73,825,975	88,991,825
Kansas City Royals	22,794,225	20,922,325	30,726,725	40,738,800	38,959,125	39,674,175	34,149,075	40,770,700
Los Angeles Dodgers	70,773,175	81,596,550	93,949,100	91,202,850	101,824,625	86,244,550	67,524,575	91,830,500
Anaheim/Los Angeles Angels	39,265,275	42,886,800	37,554,975	55,108,625	73,177,475	93,596,925	81,911,925	103,625,325
Milwaukee Brewers	38,329,400	28,519,800	39,897,525	43,351,575	35,023,275	27,518,500	40,234,825	56,790,000
Minnesota Twins	18,502,400	15,884,125	22,548,800	38,677,875	53,466,350	51,524,050	52,421,300	61,355,825
Montreal/Washington Nationals	14,977,325	30,006,750	28,978,750	34,527,225	49,950,950	35,997,925	40,484,575	52,722,925
New York Mets	57,824,475	79,509,775	83,191,450	90,993,850	100,748,800	96,758,950	97,009,400	97,020,275
New York Yankees	75,923,825	79,774,350	88,541,850	108,559,125	133,670,525	157,616,825	198,017,725	177,376,950
Oakland Athletics	22,340,700	29,603,075	31,306,250	36,740,500	48,423,875	55,393,675	53,720,450	62,322,050
Philadelphia Phillies	26,118,525	40,782,750	40,061,700	51,745,525	61,017,250	86,314,050	91,671,075	81,734,575
Pittsburgh Pirates	18,498,050	27,815,700	42,498,650	36,486,850	48,698,300	29,840,675	34,047,325	41,846,200
San Diego Padres	42,703,875	45,684,175	35,493,625	35,711,200	37,858,325	54,639,500	56,150,175	62,254,625
Seattle Mariners	48,041,825	56,649,050	67,546,875	80,282,675	80,726,400	72,807,000	67,096,350	84,927,400
San Francisco Giants	44,943,550	51,670,975	58,641,350	72,499,850	79,184,775	66,144,500	86,045,600	90,862,075
St. Louis Cardinals	42,313,275	56,901,725	66,612,800	71,248,325	67,057,175	75,633,525	89,730,625	85,039,625
Tampa Bay Rays	29,269,400	50,617,050	50,881,125	30,696,425	19,630,000	27,321,000	26,690,675	31,623,175
Texas Rangers	71,956,675	68,073,000	71,374,525	90,777,700	87,105,400	47,263,775	46,089,375	52,796,875
Toronto Blue Jays	42,797,425	44,459,925	67,677,225	66,262,350	47,480,550	48,093,275	43,621,625	66,587,975
<b>Average Salary</b>	<b>43,338,913</b>	<b>49,875,624</b>	<b>56,243,878</b>	<b>59,605,910</b>	<b>63,877,748</b>	<b>62,107,276</b>	<b>66,361,310</b>	<b>72,051,937</b>



Competitor	2011	2012	2013	2014
Joey Chestnut	62.00	68.00	69.00	61.00
Matt Stonie	34.00	46.00	51.00	56.00
Tim Janus	45.00	52.25	50.00	44.00
Erik Denmark		32.00	28.00	34.00
Brian Dudzinski				34.00
Kiki Sudo				34.00
Sonya Thomas	40.00	45.00	36.75	27.75
Michelle lesco	20.00	25.50	27.50	27.00
Juliet Lee	29.50	33.00	36.00	23.00
Meredith Boxberger		21.50	26.00	18.00

Competitor	2011	2012	2013	2014
Joey Chestnut	62.00	68.00	69.00	61.00
Matt Stonie	34.00	46.00	51.00	56.00
Tim Janus	45.00	52.25	50.00	44.00
Erik Denmark		32.00	28.00	34.00
Brian Dudzinski				34.00
Kiki Sudo				34.00
Sonya Thomas	40.00	45.00	36.75	27.75
Michelle Ilesco	20.00	25.50	27.50	27.00
Juliet Lee	29.50	33.00	36.00	23.00
Meredith Boxberger		21.50	26.00	18.00
<b>Total</b>				<b>358.75</b>

Competitor	2011	2012	2013	2014
Joey Chestnut	62.00	68.00	69.00	61.00
Matt Stonie	34.00	46.00	51.00	56.00
Tim Janus	45.00	52.25	50.00	44.00
Erik Denmark		32.00	28.00	34.00
Brian Dudzinski				34.00
Kiki Sudo				34.00
Sonya Thomas	40.00	45.00	36.75	27.75
Michelle Ilesco	20.00	25.50	27.50	27.00
Juliet Lee	29.50	33.00	36.00	23.00
Meredith Boxberger		21.50	26.00	18.00

Competitor	2011	2012	2013	2014
Joey Chestnut	62.00	68.00	69.00	61.00
<b>Matt Stonie</b>	<b>34.00</b>	<b>46.00</b>	<b>51.00</b>	<b>56.00</b>
Tim Janus	45.00	52.25	50.00	44.00
Erik Denmark		32.00	28.00	34.00
Brian Dudzinski				34.00
Kiki Sudo				34.00
Sonya Thomas	40.00	45.00	36.75	27.75
<b>Michelle Ilesco</b>	<b>20.00</b>	<b>25.50</b>	<b>27.50</b>	<b>27.00</b>
Juliet Lee	29.50	33.00	36.00	23.00
<b>Meredith Boxberger</b>		<b>21.50</b>	<b>26.00</b>	<b>18.00</b>



<b>Competitor</b>	<b>2011</b>	<b>2012</b>	<b>2013</b>	<b>2014</b>
Joey Chestnut	62.00	68.00	69.00	61.00
Matt Stonie	34.00	46.00	51.00	56.00
Tim Janus	45.00	52.25	50.00	44.00
Erik Denmark		32.00	28.00	34.00
Brian Dudzinski				34.00
Kiki Sudo				34.00
Sonya Thomas	40.00	45.00	36.75	27.75
Michelle Ilesco	20.00	25.50	27.50	27.00
Juliet Lee	29.50	33.00	36.00	23.00
Meredith Boxberger		21.50	26.00	18.00

<b>Competitor</b>	<b>2011</b>	<b>2012</b>	<b>2013</b>	<b>2014</b>
<b>Men</b>				
Joey Chestnut	62.00	68.00	69.00	61.00
Matt Stonie	34.00	46.00	51.00	56.00
Tim Janus	45.00	52.25	50.00	44.00
Erik Denmark		32.00	28.00	34.00
Brian Dudzinski				34.00
<b>Women</b>				
Kiki Sudo				34.00
Sonya Thomas	40.00	45.00	36.75	27.75
Michelle Ilesco	20.00	25.50	27.50	27.00
Juliet Lee	29.50	33.00	36.00	23.00
Meredith Boxberger		21.50	26.00	18.00

<b>Competitor</b>	<b>2011</b>	<b>2012</b>	<b>2013</b>	<b>2014</b>
<b>Men</b>				
Joey Chestnut	62.00	68.00	69.00	61.00
Matt Stonie	34.00	46.00	51.00	56.00
Tim Janus	45.00	52.25	50.00	44.00
Erik Denmark		32.00	28.00	34.00
Brian Dudzinski				34.00
<b>Women</b>				
Kiki Sudo				34.00
Sonya Thomas	40.00	45.00	36.75	27.75
Michelle Lesco	20.00	25.50	27.50	27.00
Juliet Lee	29.50	33.00	36.00	23.00
Meredith Boxberger		21.50	26.00	18.00

<b>Competitor</b>	<b>2011</b>	<b>2012</b>	<b>2013</b>	<b>2014</b>
<b>Men</b>				
Joey Chestnut	62.00	68.00	69.00	61.00
Matt Stonie	34.00	46.00	51.00	56.00
Tim Janus	45.00	52.25	50.00	44.00
Erik Denmark		32.00	28.00	34.00
Brian Dudzinski				34.00
<b>Women</b>				
Kiki Sudo				34.00
Sonya Thomas	40.00	45.00	36.75	27.75
Michelle Lesco	20.00	25.50	27.50	27.00
Juliet Lee	29.50	33.00	36.00	23.00
Meredith Boxberger		21.50	26.00	18.00

<b>Competitor</b>	<b>2011</b>	<b>2012</b>	<b>2013</b>	<b>2014</b>
<b>Men</b>				
Joey Chestnut	62.0	68.0	69.0	61.0
Matt Stonie	34.0	46.0	51.0	56.0
Tim Janus	45.0	52.3	50.0	44.0
Erik Denmark		32.0	28.0	34.0
Brian Dudzinski				34.0
<b>Women</b>				
Kiki Sudo				34.0
Sonya Thomas	40.0	45.0	36.8	27.8
Michelle Lesco	20.0	25.5	27.5	27.0
Juliet Lee	29.5	33.0	36.0	23.0
Meredith Boxberger		21.5	26.0	18.0

<b>Competitor</b>	<b>2011</b>	<b>2012</b>	<b>2013</b>	<b>2014</b>
<b>Men</b>				
Joey Chestnut	62.0	68.0	69.0	61.0
Matt Stonie	34.0	46.0	51.0	56.0
Tim Janus	45.0	52.3	50.0	44.0
Erik Denmark		32.0	28.0	34.0
Brian Dudzinski				34.0
<b>Women</b>				
Kiki Sudo				34.0
Sonya Thomas	40.0	45.0	36.8	27.8
Michelle Lesco	20.0	25.5	27.5	27.0
Juliet Lee	29.5	33.0	36.0	23.0
Meredith Boxberger		21.5	26.0	18.0

## Nathan's Hot Dog Eating Competition Historical Consumption

Competitor	2011	2012	2013	2014
<b>Men</b>				
Joey Chestnut	62.0	68.0	69.0	61.0
Matt Stonie	34.0	46.0	51.0	56.0
Tim Janus	45.0	52.3	50.0	44.0
Erik Denmark		32.0	28.0	34.0
Brian Dudzinski				34.0
<b>Women</b>				
Kiki Sudo				34.0
Sonya Thomas	40.0	45.0	36.8	27.8
Michelle Lesco	20.0	25.5	27.5	27.0
Juliet Lee	29.5	33.0	36.0	23.0
Meredith Boxberger		21.5	26.0	18.0

**Table 1** depicts the historical performance of the 2014 Top 5 competitors in both the men's and women's category of Nathan's Famous Hot Dog Eating Competition. Numerical values represent the number of hot dogs and buns eaten by each competitor during the 10 minute competition time frame.

